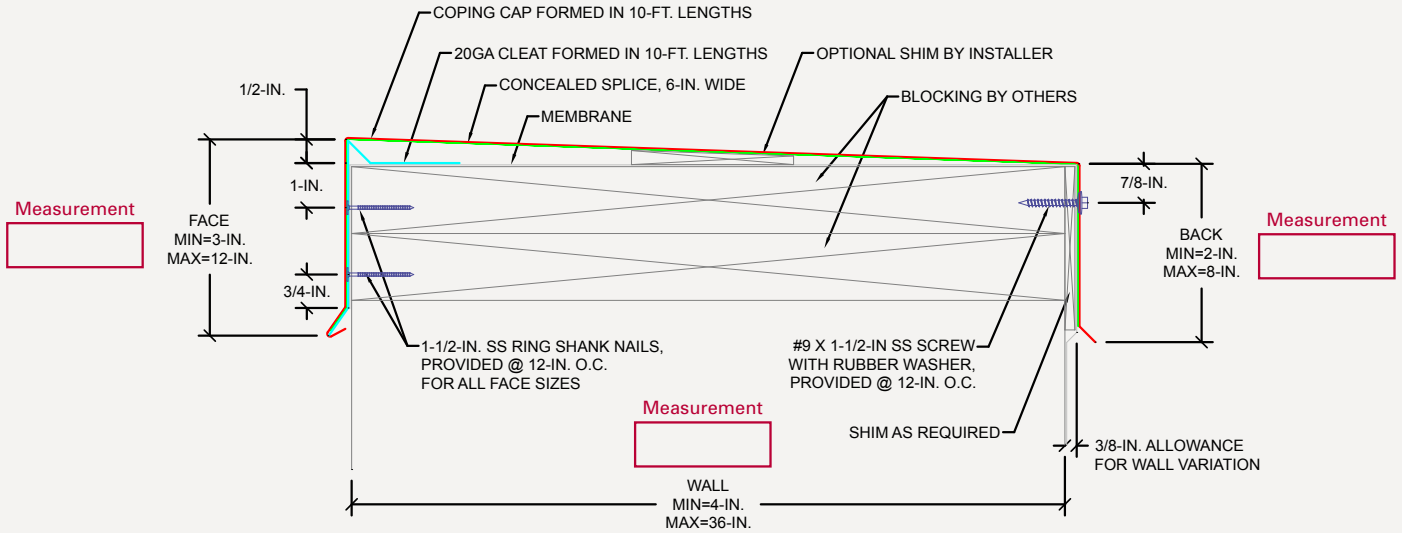




# Formed Coping Formed Coping with Continuous Cleat.

## ORDER SPECIFICATION FORM

ANSI/SPRI/FM4435/ES-1 TEST PRESSURES UP TO 196 PSF (VERTICAL), AND 113 PSF (HORIZONTAL)



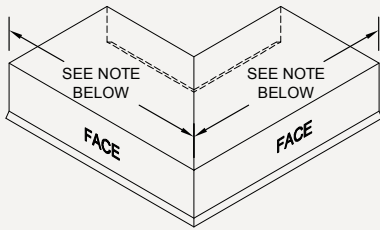
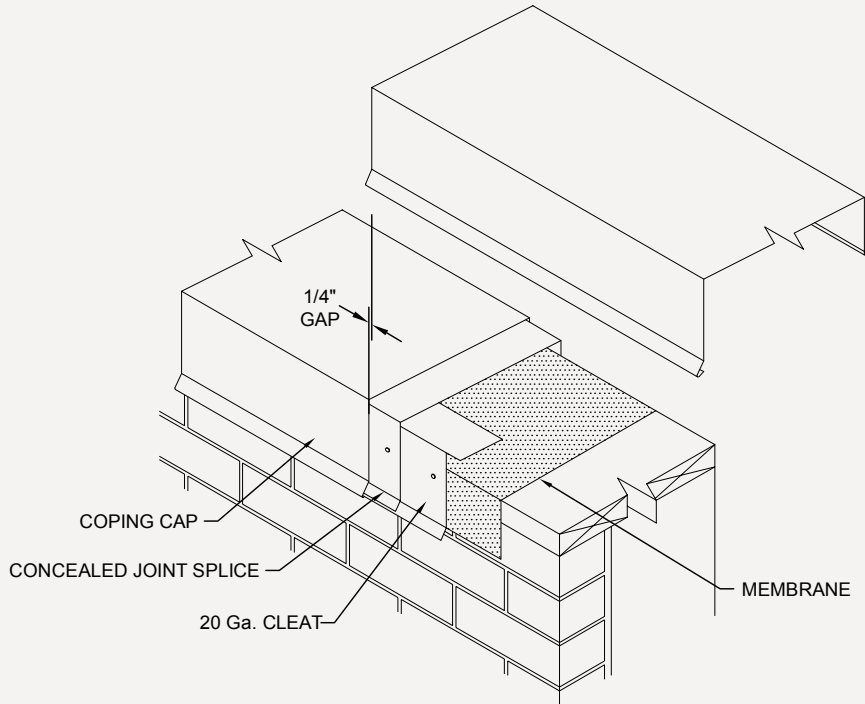
FOR MASONRY APPLICATIONS, PLEASE CONTACT OMG.  
CONTACT OMG FOR APPROPRIATE RECOMMENDATIONS NEEDED TO MEET/EXCEED ANSI/SPRI/FM4435/ES-1 DESIGN CRITERIA

APPROVALS		COVER MATERIAL	THICKNESS	COVER FINISH
Florida Product Approval		Aluminum Galvanized Steel Stainless Steel	24Ga. 22Ga. .040 in. .050 in. .063 in. .080 in.	Mill Prefinished Kynar Premium Prefinished Kynar Post Finished Kynar Prefinished Anodized Post Finished Anodized
<b>QUANTITY</b> Attach Sketches of Z- and T- Miters _____ Straight Length _____ Total Miters (Inside: _____ / Outside: _____) _____ Total End Caps (Left: _____ / Right: _____) _____ Total End Terms (Left: _____ / Right: _____) _____ Transition Miters _____ T-Miter _____ Z-Miter _____ Radius _____ Radius to Straight Miter _____ Radius End Cap _____ Vault Welded _____ Vault to Straight Miter Welded _____ Vault End Cap _____ Ridge Miter _____ Valley Miter		<b>ACCESSORY TYPE</b> Welded Metal-Lok	<b>CUSTOMER APPROVAL</b> Approved for Fabrication    Approved with Changes    Not Approved  _____ Authorized Customer Signature  Title _____ Date _____	
<b>COLOR</b> _____		Job Name: Project Location: Customer: Representative:		

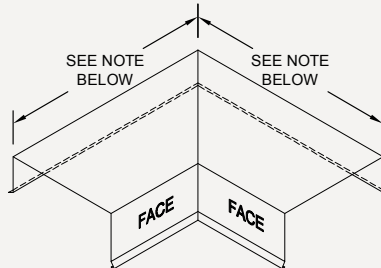


# Formed Coping

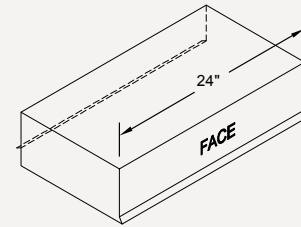
Formed Coping with Continuous Cleat.



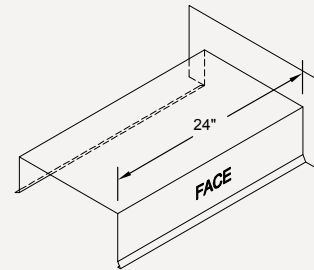
OUTSIDE MITER



INSIDE MITER



END CAP  
LEFT HAND SHOWN



END TERM  
RIGHT HAND SHOWN

Standard coping miter leg lengths:  
 23-1/4" for 6-in to 16-in wall widths  
 29-3/4-in 16" to 23-in wall widths  
 custom lengths for wall widths > 23"  
 Standard coping miter angle is 90°  
 For special miter requirements, attach sketches or consult manufacturer for assistance.



## EdgeSystems

4 COMMERCE WAY, ARDEN NC 28704 USA  
 800-892-9173 828-676-1700 [OMGROOFING.COM](http://OMGROOFING.COM)

Copyright © 2020 OMG, Inc. All rights reserved.

Superior productivity.  
 Superior performance.

